



# **New Year, New Goals: Start Strong and Elevate Your Florida Ready to Work Program**

**January 28, 2025**

[floridareadytowork.com](https://floridareadytowork.com)

# Agenda

- Introductions
- Florida Ready to Work Overview
- What's New in 2025
  - Administrator Dashboard
  - Report Options
- Class Management – Pro Tips
- Questions
- Housekeeping

# Overview

- State-sponsored **career readiness training** and **credentialing solution**
- Research-based **soft skills, digital skills, and academic employability skills** that underpin all career pathways
- Delivered in partnership with high schools, adult education programs, technical schools, state colleges, apprenticeship programs, workforce boards, juvenile justice, corrections, employers, and other workforce education partners
- State funded – **FREE** for all implementation partners and students
- Administered by the Florida Department of Commerce
- Managed by WIN Learning, national career readiness solution company

# Earning the Credentials

- **Online Training**

- Each module takes up to 2 hours to complete, includes pre-test & post test
- Online Training is **Optional**
- Supplement to in-person employability skills training you are doing

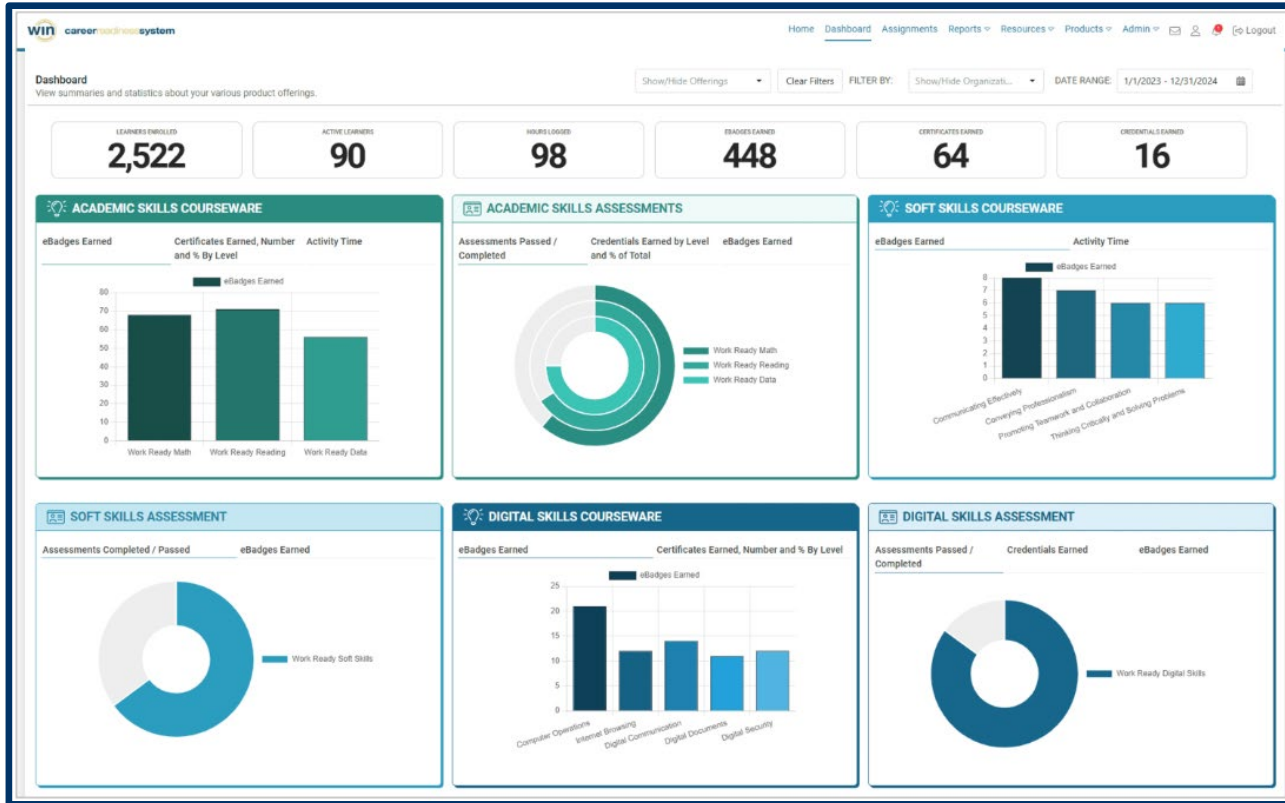
- **Proctored Assessment**

- 1-hour online assessment
- Test scores populate in real time
- Maybe retaken as many times as the candidate needs
- Virtual options are available

# THREE Stackable Credentials – Flexible Program



# NEW! Administrator Dashboard



# NEW! Report Options

- Date Filters
- Product Filters
- Objective Based Reports – Now available for Academic Employability Skills Training

# Class Management Pro Tips

- Creating classes for your small group of students
  - Follow your students through classes to see how they are navigating Florida Ready to Work
- Single Sign-On – Great tool for tracking students
- Classes allow you to run reports and administer assessments more efficiently
- Classes can be archived when students have completed Florida Ready to Work (or graduated)



# Questions

# Role of the Proctor

- **Explain** – What is Florida Ready to Work and how earning state-sponsored, nationally endorsed credentials will benefit participant long-term.
- **Enroll** – Create username and passwords for participants and provide step-by-step instructions on how to access program.
- **Monitor** – Review participants progress within the training.
- **Assess** – Administer the assessments so participants can earn the Florida Ready to Work Credentials.

Need a refresher? Visit [FloridaReadytoWork.com/events](https://FloridaReadytoWork.com/events) for weekly proctor training

# Implementation Strategies

- Diagnostic tool to evaluate students' readiness for career academy rigor and inform individual learning plans
- Prepare students for internships, OJT, work-based learning experiences, job fairs, apprenticeships, interviews, and more
- Career-contextualized instructional relevance for all students requiring foundational math or reading refresher / remediation
- Gain credibility with your local business community that you're listening to their workforce needs
- GED Preparation; ESOL Integration; Part of IET Plans

# Just for Adult Educators

- Use the *Florida Adult Education Employability Curriculum Alignment to Florida Ready to Work* to match curriculum standards to Florida Ready to Work lessons
  - Access the crosswalk at [FloridaReadytoWork.com/resources](https://floridareadytowork.com/resources)
- Incorporate Florida Ready to Work into your IET Plans
  - Training counts towards workforce preparation activities

# Next Steps

- Are you currently using Florida Ready to Work? If not, raise your hand now and let's get you signed up.
- Using Florida Ready to Work – Have you booked a mid-year teacher training? Contact the Florida Ready to Work Team!
- Communicate to students, teachers, and your business partners.
- Visit [FloridaReadytoWork.com/resources](https://FloridaReadytoWork.com/resources) to get resources for promoting the program.
- And get started!

## Customer Feedback Survey



## Webinar Topic Survey





**Mariellen Batchelor**

[mbatchelor@floridareadytowork.com](mailto:mbatchelor@floridareadytowork.com)  
407.212.7617  
Central Florida

**Holly McFadden**

[hmcfadden@floridareadytowork.com](mailto:hmcfadden@floridareadytowork.com)  
754.235.7626  
South Florida

**Valencia Strowder**

[vstrowder@floridareadytowork.com](mailto:vstrowder@floridareadytowork.com)  
904.200.0990  
North Florida

**Tiffany Vause**

[tvause@floridareadytowork.com](mailto:tvause@floridareadytowork.com)  
850.766.4646  
Panhandle

[customerservice@floridareadytowork.com](mailto:customerservice@floridareadytowork.com)  
888-717-9461

**[floridareadytowork.com](http://floridareadytowork.com)**